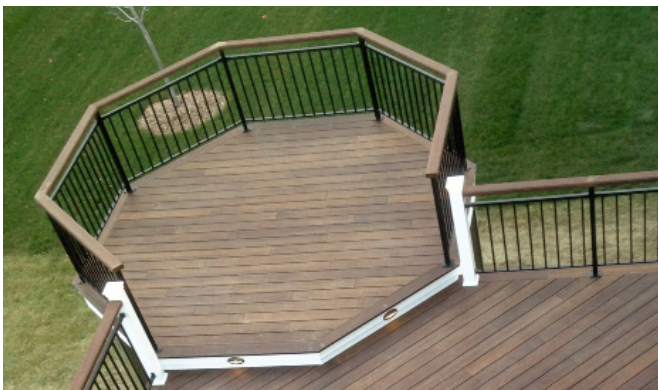


RESIDENCE | MINNEAPOLIS, MINNESOTA

## PROJECT PROFILE

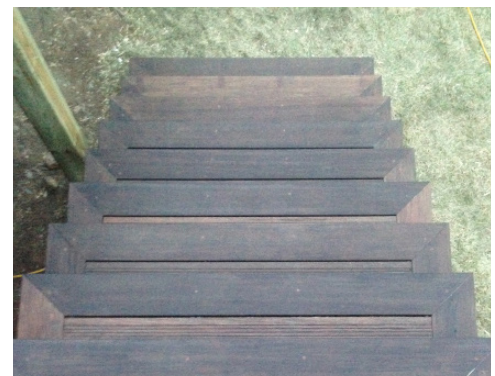


## MINNEAPOLIS RESIDENCE

OUTDOOR BAMBOO DECKING

designer **Ben Boomer & Mark King**  
contractor **Infinite Decks**  
client **Ben Boomer**  
dealer **TCH**

product **dasso.XTR Fused Bamboo**<sup>®</sup> Decking  
quantity **800 sqft** date **2013**





FUSED BAMBOO® DECKING

The dasso Group, based in Hangzhou, China, has been the world's leader in innovative bamboo products for more than two decades. With 10 manufacturing facilities, over 1,000 employees, a Design and Research Center, and over 40 patents to date, dasso's mission is in to advance the innovative use of bamboo throughout the world.

AVAILABLE IN 2 COLORS



PATENTED: CHINA, RUSSIA, AUSTRALIA, USA, EU, MALAYSIA, SINGAPORE

**RESIDENTIAL DECKING**

Item Code	Dimensions	Edges	Ends	Finished with
XTR-DK20-G0-PP	20 mm x 137 mm x 1829 mm 3/4" x 5-3/8" x 72"	1 Groove 2 Grooves	T&G	WOCA Oil

**COMMERCIAL DECKING**

Item Code	Dimensions	Edges	Ends	Finished with
XTR-DK40-G0-PP	40 mm x 137 mm x 1829 mm 1-1/2" x 5-3/8" x 72"	0 Grooves	T&G	WOCA Oil

**TECHNICAL HIGHLIGHTS**

- » Unsupported end-match joint has a span rating of 100 psf.\*  
\*Per ASTM D7032 over 16" framing
- » Class A fire rating per ASTM E84.
- » More dense than Ipe.<sup>1</sup>

**DESIGN FEATURES**

- » Only decking on the market with an end joint that can be installed off the joist.
- » Can stain to a variety of colors using our XTR Guard system.
- » The look and feel of a natural wood product. Performs like dense tropical hardwoods.
- » Offers the consistent quality of a manufactured composite product.

**INSTALLATION BENEFITS**

- » Available pre-primed for subsequent on-site topcoating.
- » Side-grooved for hidden fastening or can be face-screwed with screws exposed or plugged using dasso.XTR plugs.
- » Decking is 6' long and end-matched for installation on the joist (on 12"/18"/24" centers) or by coverage method off the joist on 16" centers.
- » Less time, less labor, less waste and easier installation.

**COMPARISON CHART** SEE [dassoXTR.com](http://dassoXTR.com) FOR ALL TECHNICAL SPECS.

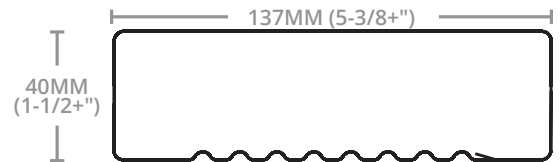
SKU	dassoXTR Espresso	dassoXTR Cognac	Ipe/Brazilian Walnut	Meranti Batu	Western Red Cedar
<b>Density</b> lb/ft3(kg/m3)	69 (1,100)	75 (1,200)	66 (1,060)	53 (850)	23 (370)
<b>Strength M<sub>0</sub></b> psi(MPa)	11,922 (82)	17,730 (122)	19,173 (132)	17,259 (119)	7,498 (52)
<b>Stiffness MOE</b> 1000psi(MPa)	2,101 (14,490)	2,013 (13,880)	3,200 (22,070)	245 (16,950)	1,100 (7,584)
<b>Janka Hardnes</b> Newton(lbf)	16,992 (3,820)	17,659 (3,970)	15,620 (3,510)	7,117 (1,600)	3,110 (700)
<b>Shrinkage</b>					
longitude %	0.02	0.06	0.16	0.17	0.20
width %	0.40	1.20	5.90	5.50	2.40
thickness %	1.90	3.70	7.20	10.10	5.00



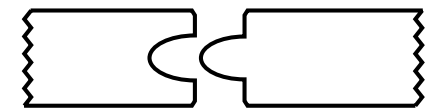
**SINGLE GROOVE PROFILE**  
XTR-DK20-G1-PF



**DOUBLE GROOVE PROFILE**  
XTR-DK20-G2-PF



**COMMERCIAL DECKING**  
XTR-DK40-G0-PP



**END MATCH**  
All of our decking is end-matched for ease and improved quality of installation and to provide full coverage on or off the joist. Learn more at [dassoXTR.com](http://dassoXTR.com).

**30 YEAR LIMITED WARRANTY**  
dasso.XTR products are manufactured using a patented process to ensure lasting outdoor beauty and enjoyment. Periodic recoating with XTR Guard is recommended to maintain its rich color. Please follow our maintenance instructions.

Visit [dassoXTR.com](http://dassoXTR.com) for copies of our installation and maintenance instructions and warranties.